

# Abbey Road houses

## A look into the future

Summer 2018



**CLARION**  
HOUSING



Architects' sketch of how your replacement home could look

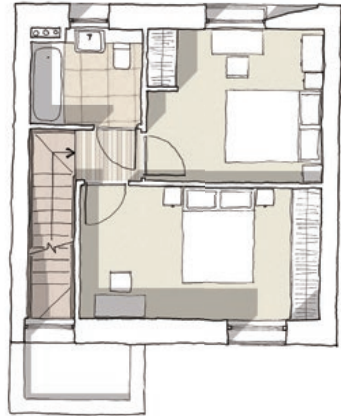
This handout shows our initial design proposals for your replacement home, which will be located on Abbey Road. Please fill in the feedback form enclosed to let us know what you think about the designs so far.

# Floor plan

Existing homes - 95 sqm  
New homes - a minimum of 99 sqm



Ground floor



Second floor



First floor

This diagram shows the floor plan of the new homes

## Living room and kitchen



The living room will be on the first floor



The kitchen diner will be on the ground floor and look onto a sheltered patio and garden



Architect's sketch of how the new home could look



Architects' sketch with a double height ceiling at the entrance of the home

## Contact us

If you have any further questions please contact Donna Brown, your regeneration manager, on **02 3784 5951** or email [mertonregen@clarionhg.com](mailto:mertonregen@clarionhg.com).



**CLARION**  
HOUSING